

# Yn y Lwp!

(In the loop - Ysgol Cwm Brombil's Weekly Bulletin)

**Pob lwc yn yr Arholiadau Blwyddyn 11!**  
**Good luck in your exams Year 11!**

We wish our year 11 cohort the very best in their upcoming exams.  
All the hard work and revision should reap its rewards.

## Summer Term / TYMOR Y GWANWYN

Start / *Dechrau*: Monday 8 April 2024 / *Dydd Llun Ebrill 8 2024*

(Inset day Monday 20<sup>th</sup> May / HMS Dydd Llun Mai 20)

Half Term : Monday 27<sup>th</sup> May - Friday 31<sup>st</sup> May /

*Hanner Tymor*: Dydd Llun Mai 27 - Dydd Gwener Mai 31

End / *Diwedd*: Friday 19<sup>th</sup> July 2024 / Dydd Gwener Gorffennaf 22

## Upcoming activities:

Week Beginning -		Monday 27 <sup>th</sup> May 2024	
Monday		HALF TERM	
Tuesday			
Wednesday			
Thursday			
Friday			

Week Beginning -		Monday 3 <sup>rd</sup> June 2024	
Monday	GCSE Exams		
Tuesday			
Wednesday			
Thursday			
Friday			



## Exam Timetable June 3<sup>rd</sup> – June 7<sup>th</sup> 2024

Date	Start time	Length	Component Code
Monday 3 <sup>rd</sup> June	09:00	1:30	Maths Numeracy Unit 2 Foundation Calculator
Monday 3 <sup>rd</sup> June	09:00	1:45	Maths Numeracy Unit 2 Intermediate & Higher Calculator
Monday 3 <sup>rd</sup> June	13:00	1:20	Sport & Coaching Unit 1
Monday 3 <sup>rd</sup> June	13:00	35 mins	Spanish Unit 2 Foundation: Listening
Monday 3 <sup>rd</sup> June	13:00	1hr	Spanish Unit 3 Foundation: Reading
Monday 3 <sup>rd</sup> June	13:00	45 mins	Spanish Unit 2 Higher: Listening
Monday 3 <sup>rd</sup> June	13:00	1:15	Spanish Unit 3 Higher: Reading
Tuesday 4 <sup>th</sup> June	09:00	1:30	Welsh Second Language Unit 4: Written
Tuesday 4 <sup>th</sup> June	13:00	1hr	History Unit 2B: Written
Wednesday 5 <sup>th</sup> June	09:00	1:30	Geography Unit 2
Wednesday 5 <sup>th</sup> June	13:00	1:30	Business Unit 2

Thursday 6 <sup>th</sup> June	09:00	2hr	English Language Unit 3 Argumentation
Friday 7 <sup>th</sup> June	09:00	2hr	Religious Studies Unit 2B: Written

## Extra Curricular Timetable

There are lots of lunchtime and after school activities to suit a variety of tastes.  
Unfortunately, due to financial constraints, we are currently unable to offer transport home currently.  
**Pupils who attend after school clubs must make their own arrangements for transport home.**

**\*Please note that clubs that normally run in the indoor Sports facilities will not be running over the exam period.**

Day	Lunch Time	Room + Staff	After School	Room + Staff
<b>Monday</b>	Library (Yrs 9, 10, 11)	B15 – Miss Collins	Homework & Catch up Club Young Carers First Aid Club (all years)  Touch Rugby (Mixed)	Learning Centre B36 – Miss Leahy B20 - Mrs Jerwood & Mrs Thomas  3G/Grass Pitch – Pe Staff
<b>Tuesday</b>	Library (Yrs 7 & 8) Chess Club	B15 – Miss Collins C29 – Mr McDaid (Yrs 9, 10, 11)	Homework & Catch up Club Tennis Club Cricket	Learning Centre Muga/Sports Hall – PE Staff Muga/Sports Hall -PE Staff (Yr 7 & 8)
<b>Wednesday</b>	Library (Yrs 7 & 8) Strength & Conditioning (Yrs 9-11) Junior Safeguarding Board	B15 – Miss Collins Back Gym C6 – Mrs Pereira-Thomas	Homework & Catch up Club Badminton (Yrs 7 - 11) Book Club (Yrs 7 ,8 & 9) Science Club (Yrs 7 & 8) GCSE History Revision & Catch up GCSE Graphic Design Coursework Support Rounders Cooking Club	Learning Centre Sports Hall Library – Mrs Sherlock C9 – Miss Woodington B21 – Mrs Sims (Yrs 9, 10, 11) B20 – Mr Hopkins (Yrs 9, 10, 11) 3G – PE Staff A17 – Mrs Monck/Mrs Leach
<b>Thursday</b>	Library (Yrs 7 & 8)	B15 – Miss Collins	Homework & Catch up Club Debate Club Eco Club Male Choir Crochet Club Strength & Conditioning Maths Revision Creative Writing Club Athletics Club Art Club Cricket Club	Learning Centre B3 – Miss Harris ( <b>Week 2 Only</b> ) B25 – Mr Westrop A3 – Mr Murray B11 – Mrs Jones Back Gym/Multi-Gym (Yrs 9, 10, 11) Maths rooms – Maths Staff (Y11) B30 – Miss Evans ( <b>Week 1 Only</b> ) 3G/Sports Hall/MUGA – PE Staff B11 – Miss Parry-Jones 3G/Sports Hall – PE Staff
<b>Friday</b>	Strength & Conditioning (Yrs 9, 10, 11)	Back Gym		

## YCB Community

**The Pantry** - We are open every Thursday 3pm - 4pm we support everyone within our school community please come along if you need any help, no referral needed just pop along through the pupil entrance in the Secondary Phase.

The Pantry is in need of donations of any essential items including:

- Tinned meats - corned beef, stewing steak, ham, hot dogs
- Tuna
- Beans and Sausages
- Tinned pots
- Pasta shapes
- Noodles
- Micro Rice
- Curry sauce
- Pasta sauce
- Soups
- Condiments
- Coffee
- Shower gel
- Shampoo
- Toilet rolls
- Toothpaste
- Washing powders
- Biscuits
- Crisps

There is a drop off shopping trolley point in reception.

Thank you for your support

## Attendance Information



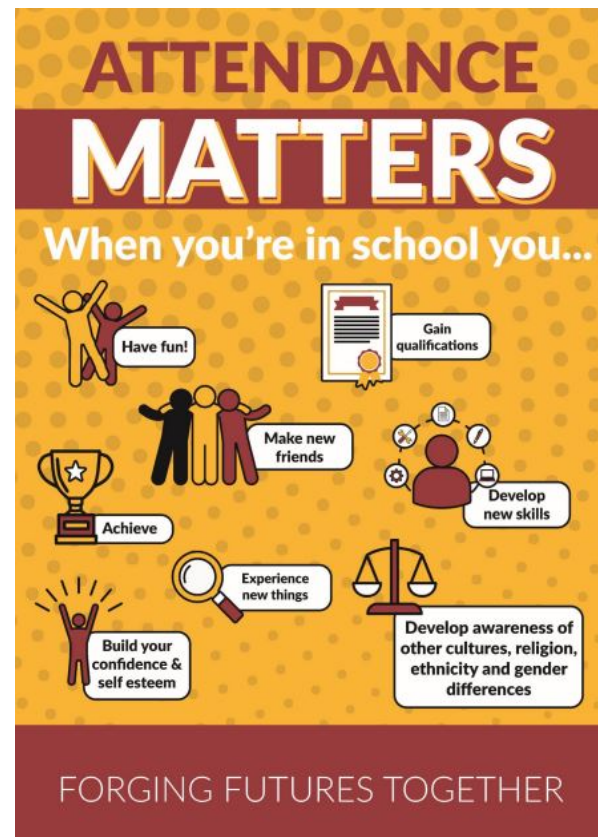
Our attendance target for all students is 100% and our **minimum expectation is 95%**. The infographic above shows the impact of days missed and minutes late can have on a child's learning.

For example:

- If a child is **late to school just 5 minutes** each day, throughout the year that equates to **3 days lost to learning (15 hours)**.
- Attendances of **97%** allows for one day of absence per half term and results in **30 hours lost to learning**.

### Important Reminders:

1. Parents **MUST** contact school to report any absences on **01639 760110 before 8.30 am**.
2. Parents should contact the school **each day** that a pupil is not attending.
3. If the school are not notified, then **you will be contacted** by a member of the Attendance team to find out why your child is not in school.
4. If you child is not notified of the reason for the absence it will be recorded as **unauthorised absence**.
5. If there are three unauthorised absences in a row, the Safeguarding Lead and Education Welfare Officer will be made aware in order to ensure that your child is safe.
6. You will be required to produce medical evidence if you state that your child is ill for 3 or more consecutive days.
7. We will ask the school Healthcare Professional to contact you if there is an absence of more than 2 weeks.
8. Term time leave will only be granted by the headteacher on request.
9. Where possible, **all appointments should be made outside of the school day**.



## School Uniform Expectations

All students are expected to wear school uniform throughout the school day. Below are uniform guidelines for both boys and girls, as well as PE Kit:

### All pupils Year 7 to 11

Blazer	Black school blazer	Available from Bergoni. Blazers must be brought to school and worn every day.
Shirt	White shirt with collar.	Can be purchased from any retailer.
Trousers	Plain black tailored uniform style trousers.	Jean style, corduroys, skinny or casual trousers are not permitted.
Skirt *	Plain black school uniform style skirt.	Skirts should be an appropriate length.
Tights	Plain black tights	Can be purchased from any retailer.
Shoes	Black shoes with black laces.	Available from any retailer. Black leather converse shoes are permitted. NO TRAINERS
Tie	School tie.	Available from Bergoni.
Jumper	Black with badge and claret trim around the collar.	Available from Bergoni. Jumpers are optional.
Shorts	Black tailored shorts.	Optional for the summer term.
Outdoor coat/Jacket	Coats should be waterproof and black in colour.	Available from any retailer.
Socks (only if not wearing tights)	Ankle height, plain black or white.	Available from any retailer.

For further information regarding our uniform expectations please see our school website:

<https://ysgolcwmbrombil.npted.org/uniform.html>

# Vaping/ e-cigarettes

## Information regarding e-cigarettes / vaping

We want to bring to your attention the worrying trend amongst a few peoples in school. We are taking this issue very seriously due to the negative health effects vaping can have and the negative affect it can have on a pupil's learning.

This letter aims to:

- Inform you of the issue;
- Give you access to information and resources;
- Alert you to the consequences if your child vaping on school property

### What is vaping?

Vaping is the act of inhaling a vapour produced by an e cigarette or electronic vaporiser (vape). The vapour that is inhaled usually contain nicotine, which is highly addictive, and many other chemicals which are potentially harmful. Some vapes even contain cannabis oil! The liquids that are inhaled are often flavoured and can even smell fruity. Some vapes are marketed with sweet like names and come in attractive colours.

### Health concerns

The aerosol from e-cigarettes can be damaging to a person's health, particularly the developing bodies of adolescents. It can contain harmful chemicals, including nicotine; ultrafine particles that can be inhaled deep into the lungs; flavourings such as diacetyl, a chemical linked to lung disease; volatile organic compounds such as Benzene which is also found in car exhaust fumes and heavy metals such as nickel, tin and lead which can build up to toxic levels in the body over time.

There has been a significant increase in underage vaping over the last couple of years.

Vaping is illegal to under 18's. Research shows that the adolescent brain is far more susceptible to addictive substances and this ultimately leads to an unnecessary and potentially harmful distraction from the child's learning.

Our first and foremost concern is pupil health and safety. Pupils who are using these devices are inhaling nicotine and other harmful chemicals thinking it is safe. Pupils purchasing and using these vapes, particularly those from the internet, risk inhaling higher levels of nicotine than cigarettes. Nicotine is addictive and can harm brain development in adolescents. There is also the risk of other illegal substances and even more dangerous substances in some of these vapes.

### How the school has responded,

There has been a significant amount of publicity about the concerns with underage vaping. At Ysgol Cwm Brombil we have installed vape alarms as a deterrent in toilets around the school. These allow us to identify pupils that are vaping and impose consequences as well as provide support for what is, essentially, an addiction to nicotine.

### Consequences for a child found vaping on school site and / or bringing a vape onto the school site.

Smoking (including the smoking of e-cigarettes / vapes) is against the law for young people under the age of 18, and, as our policy states, smoking is prohibited throughout the school premises. This includes school buses.

Pupils caught vaping will receive an afterschool detention in the first instance, an internal exclusion if they are caught a second time and a third time will result in an external exclusion from school.

The e-cigarette / vape will be confiscated and the child's parent / carer informed. The parent / carer may collect the e-cigarette / vape in the following week. Under no circumstance will they be returned to the child themselves. If the e-cigarette / vape is not collected within a week it will be safely disposed of.



# HARMFUL EFFECTS OF VAPING



## BRAIN

- Nicotine addiction
- Headaches
- Dizziness
- Seizures
- Tremors
- Anxiety
- Restlessness
- Confusion
- Attention problem
- Learning and mood disorders

## EYES

- Irritation
- Blurry
- Vision

## MOUTH

- Irritation
- Can cause gum disease

## THROAT

- Sore throat

## LUNGS

- Rapid, shallow breathing
- Coughing
- Wheezing
- Permanent lung damage from diacetyl, a flavoring chemical, which scars tiny air sacs making airways thick and narrow

## HEART

- Increased risk of heart attack and stroke
- Chest pain

## STOMACH & INTESTINES

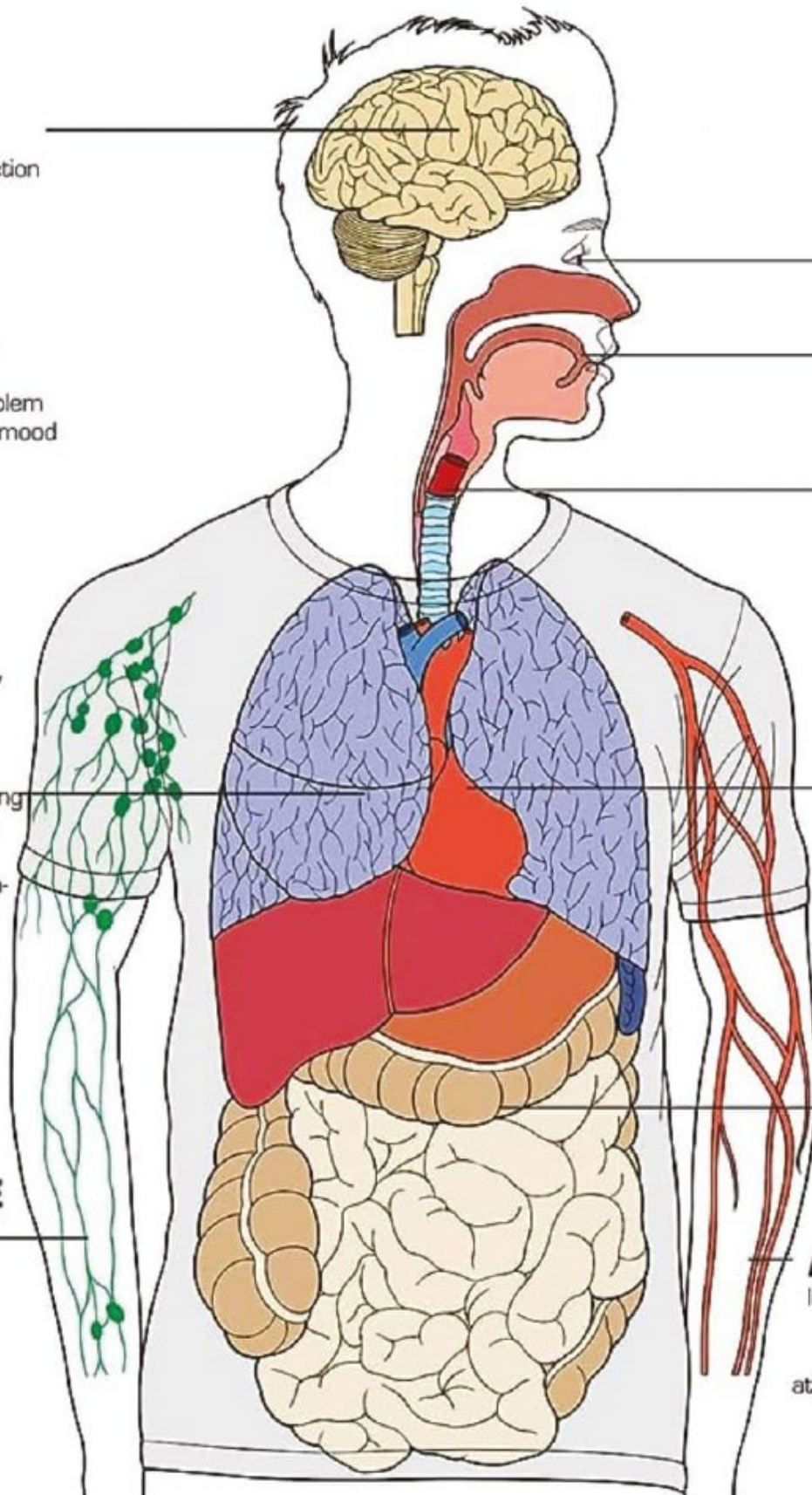
- Vomiting
- Nausea
- Abdominal pain

## IMMUNE SYSTEM

- Can harm your immune system increasing your risk of illnesses

## ARTERIES

- Increases blood pressure and risk of heart attack and stroke



## Term dates for 2023-24

Autumn Term, half term 1 2023-24	
Monday 4 <sup>th</sup> September 2023	Year 7 & 11 attend school
Tuesday 5 <sup>th</sup> September 2023	Years 8,9 & 10 attend school
Friday 27 <sup>th</sup> October 2023	Last Day of half term 1
Half Term holiday - Monday 30 <sup>th</sup> October 2023 – Friday 3 <sup>rd</sup> November 2023	
Autumn Term, half term 2 2023-24	
Monday 6 <sup>th</sup> November 2023	Term starts
Friday 1 <sup>st</sup> December 2023	Staff INSET (Training) Day
Monday 4 <sup>th</sup> December 2023	Staff INSET (Training) Day
Friday 22 <sup>nd</sup> December 2023	Last Day of half term 2
Christmas Holiday – Monday 25 <sup>th</sup> December 2023 – Friday 5 <sup>th</sup> January 2024	
Spring Term, half term 3 2023-24	
Monday 8 <sup>th</sup> January 2024	Staff INSET (Training) Day
Tuesday 9 <sup>th</sup> January 2024	Half term 3 Starts for all pupils
Friday 9 <sup>th</sup> February 2024	Last Day of half term 3
Half Term holiday - Monday 12 <sup>th</sup> February 2024 – Friday 16 <sup>th</sup> February 2024	
Spring Term, half term 4 2023-24	
Monday 19 <sup>th</sup> February 2024	Term 4 Starts
Thursday 21 <sup>st</sup> 2024	Last Day of half term 4 for pupils
Friday 22 <sup>nd</sup> March 2024	Staff INSET (Training) Day
Easter holiday - Monday 25 <sup>th</sup> March 2024 - Friday 5 <sup>th</sup> April 2024	
Summer Term, half term 5 2023-24	
Monday 8 <sup>th</sup> April 2024	Term 5 Starts
Monday 6 <sup>th</sup> May 2024	May Day Bank Holiday
Monday 20 <sup>th</sup> May 2024	Staff INSET Day Year 10 & 11 GCSE English Exam
Friday 24 <sup>th</sup> May 2024	Last Day of half term 5
Half Term - Monday 27 <sup>th</sup> May 2024 - Friday 31 <sup>st</sup> May 2024	
Summer Term Half term 6 2023-24	
Monday 3 <sup>rd</sup> June 2024	Half term 6 Starts
Friday 19 <sup>th</sup> July 2024	Last Day of half term 6 & End of school Year

